

# C JAMES & CO - TOOTING

SALES AND LETTINGS SPECIALISTS



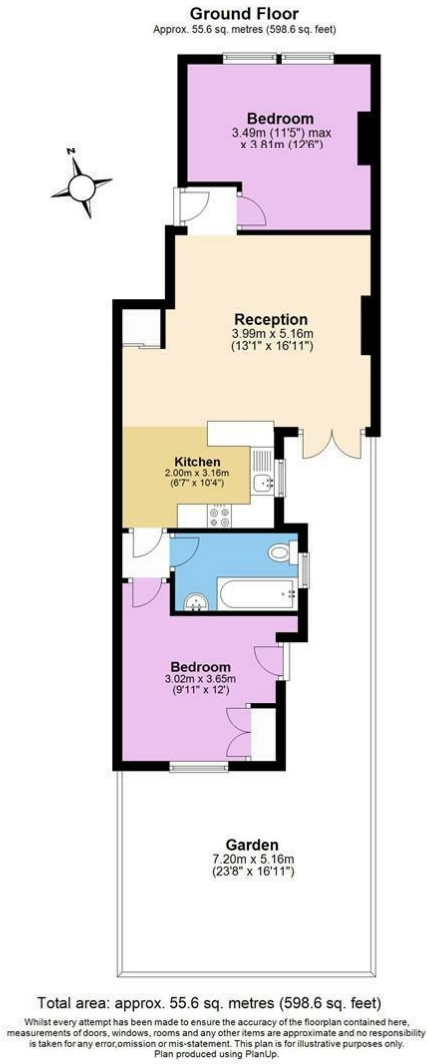
**22 Cricklade Avenue, Streatham, SW2 3HG**

**£1,850 Per month**

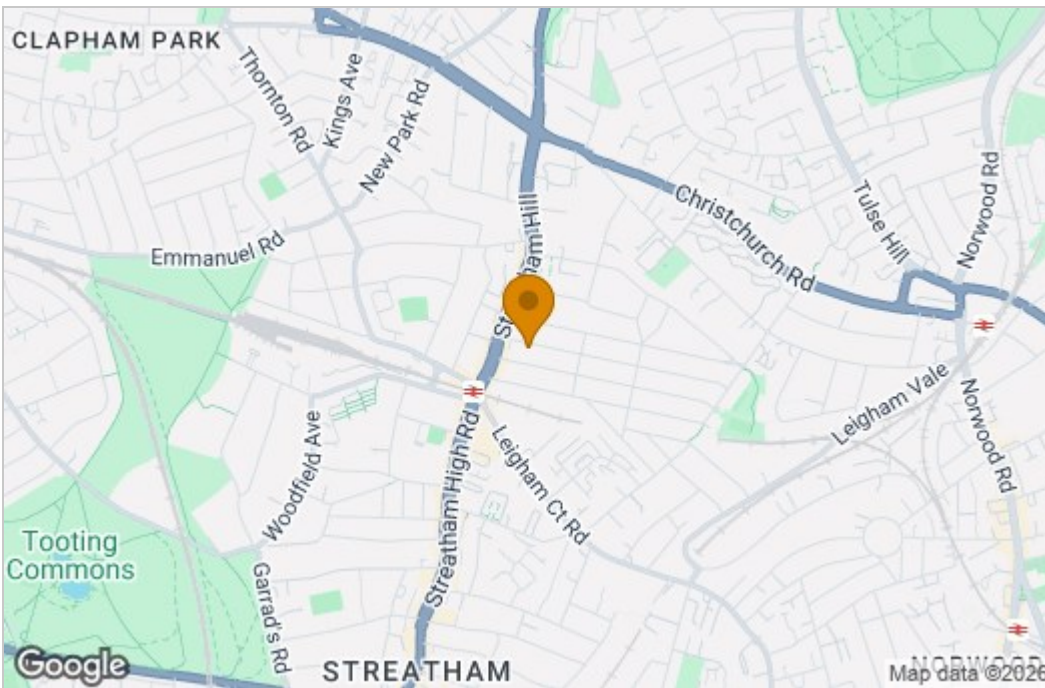
A lovely ground floor flat in a leafy Streatham street! Both bedrooms are doubles with fitted wardrobes and one has a door leading to the rear garden. The kitchen and reception room is partially open plan and the whole flat feels light and airy. Available from 5 October. Lambeth Council, band C, £1566.13 pa



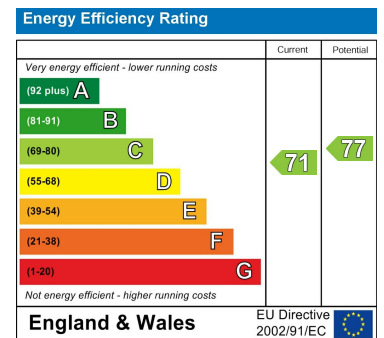
# Floor Plan



# Area Map



# Energy Efficiency Graph



These particulars, whilst believed to be accurate are set out as a general outline only for guidance and do not constitute any part of an offer or contract. Intending purchasers should not rely on them as statements of representation of fact, but must satisfy themselves by inspection or otherwise as to their accuracy. No person in this firm's employment has the authority to make or give any representation or warranty in respect of the property.